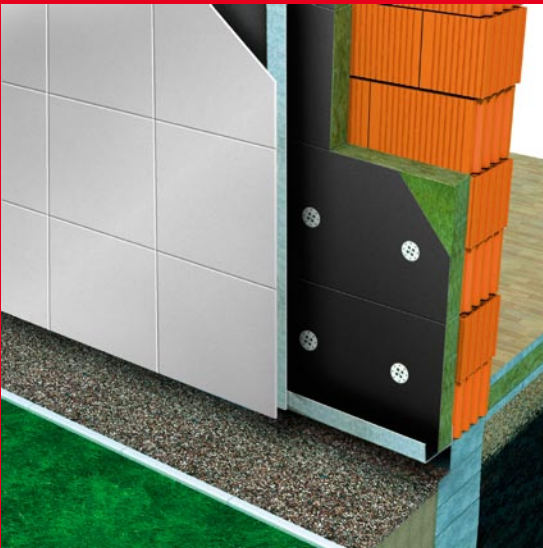


# ROCKWOOL<sup>®</sup>

Technical Datasheet

## FIXROCK (FB1, FW1)



Segment of application  
**General building - Facade**

# FIXROCK (FB1, FW1)

Slab for assembled external wall structures, cladged with glas, wood, stone, bricks or composite external cover

## PRODUCT DESCRIPTION

A medium density water repellent mineral wool slab for assembled external walls with or without ventilation gap.

## APPLICATIONS

Rockwool Fixrock is recommended to be used for thermal insulation of external walls with overhanged facade cladding. The assembled facade structure is usually done with a ventilation gap between the cladding and the insulating shield. The structure of Fixrock slabs is specially designed to resist the air flow impact inside this ventilation gap. Fixrock can also be used for cavity wall insulation or even for the insulation in metal cassette wall systems. Upon request we supply Fixrock also with one side glas fleece coating in white or black colour (FB1 eq. black fleece; FW1 eq. white fleece).

## PROPERTIES OF ROCKWOOL MINERAL WOOL

Rockwool Fixrock is an excellent thermal insulator. It is not flammable when exposed to open flame and does not generate smoke nor burning droplets. Fixrock helps to prevent the spread of fire. It has good sound absorption properties. Slabs are water repellent through the whole section and at the same time diffusion open for the vapour transmission. Fixrock slabs are form stable and rigid enough to enable the fixing to the wall by 2 mechanic fixers per slab only.

## PACKAGING

Rockwool Fixrock slabs are being produced in the width 600 mm. We deliver the product in packs on wooden pallets covered with PE plastic cover hood.

## DIMENSIONS, PRODUCT RANGE AND PACKAGING

Thickness (mm)	40	50	60	80	100	120	140
Length x width (mm)	1200 x 600						
m <sup>2</sup> / pack	10.80	8.64	7.20	4.32	4.32	3.60	2.88
m <sup>2</sup> / pallet	172.80	138.24	115.20	86.40	69.12	57.60	46.08

## TECHNICAL PARAMETERS

Property	Symbol	Value	Unit	Standard
Reaction to fire	-	A1	-	EN 13501 - 1
Declared coefficient of thermal conductivity	$\lambda_D$	0.037	W/mK	EN 12667
Water vapour transmission	$\mu$	1.4	-	EN 12086
Nominal bulk density	$\rho$	40	kg/m <sup>3</sup>	EN 1602
Thickness tolerance	T2	-5 +15	mm	EN 823
Water absorption at short time immersing in water	WS	≤ 1,0	kg/m <sup>2</sup>	EN 1609
Water absorption at long time immersing at water	WL(P)	≤ 3,0	kg/m <sup>2</sup>	EN 12087
Melting point	T <sub>t</sub>	> 1000	°C	DIN 4102
CE - certificate number	ACERMI EC - Certificate of conformity 1163-CPD-0197			

Current HSE 'CHIP' Regulations and EU directive 97/69/EC confirm the safety of Rockwool.

Any information contained in this document describes the product properties applicable as at the time of issue. Please require from your supplier allways the most recent issue of this Technical datasheet, because with respect to continous product development, we retain the right to change some values without prior notice.

**ROCKWOOL®**  
F I R E S A F E I N S U L A T I O N